

August 2017
School of Social Work

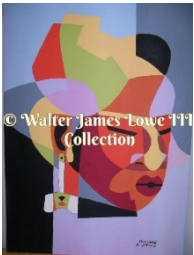


Dr. Pat Guillory, LCSW-BACS was the invited keynote speaker for the annual Step Sisters group Banquet, a community group providing scholarships to deserving young women who exemplify the benefits of hard work and dedication to their academic pursuits. According to feedback from banquet participants, Dr. Guillory's speech was inspiring.

On another note, Dr. Guillory was invited to be the trainer for a number of Resources for Human Development programs in the New Orleans area. Her training sessions included Recovery Philosophy, Stages of Change in Therapy, and Ethical Decision-Making.

Dr. Samuel Odom was recently appointed to the Board of Directors for the Congressional Research Institute for Social Work and Policy (CRISP). CRISP is committed to expanding the participation of social workers in federal legislative and policy processes. CRISP acts as a bridge between social work researchers and the federal government to ensure their research is known to federal policy makers. CRISP works to expand opportunities for students to find field placements in federal government offices both on the Hill and in offices near their schools. Dr. Odom plans to engage the school of Social Work with resources from CRISP.

Dr. Ira Neighbors, Associate Professor in Social Work recently completed a Master's degree in Museum Studies at SUNO. His proposed exhibit "African-Masks" has been accepted for showing at the New Orleans African-American Tricentennial Art Exhibition. The exhibit "African-Masks" is included in "Painting Our Own Story- Singing Our Own Song" schedule to open on January 13, 2018. Dr. Neighbors is examining the relationship between art and social work and his collection of works by Walter James Lowe informs his work in this area.



He also had a paper accepted at the International Conference on Disability and Diversity In Honolulu, Hi.

Dr. Harry Russell developed a student-faculty advisement log and a student-staff visitation log that will be used to track the number and kind of interactions between faculty, staff and students in the school of social work. The data gathered will be used to document the number and kind of contact events occurring within the school which may be used for grants and accreditation data.

Dr. Russell recently became a member of the Juvenile Detention Alternative Initiative (JDAI) assessment team in Orleans Parish. He is working closely with the director of the initiative, Ms. Damika Morgan, an

alumnus of the SSW and Ms. Anna Arkin-Gallagher to establish a collaborative partnership with the SSW. The JDAI is looking to engage students who would conduct assessments, monitoring, and policy advocacy.



Dr. Patrice Sentino (center) was invited to Pietermaritzburg, South KwaZulu-Natal, Province, South Africa to facilitate the education and information dissemination to parents and teachers about Attention Deficit Disorders (ADD) and Attention Deficit Disorder with Hyperactivity (ADHD) in children. Dr. Sentino worked at Slangspruit Primary School where she conducted training. She will present information about her work at the Primary School in Pietermaritzburg at a faculty meeting and she is planning to develop an opportunity for some kind of exchange between Slangspruit and the SUNO School of Social Work. For a look at the Slangspruit School paste this link into your browser. <https://www.youtube.com/watch?v=4PbyBjuHzvY>