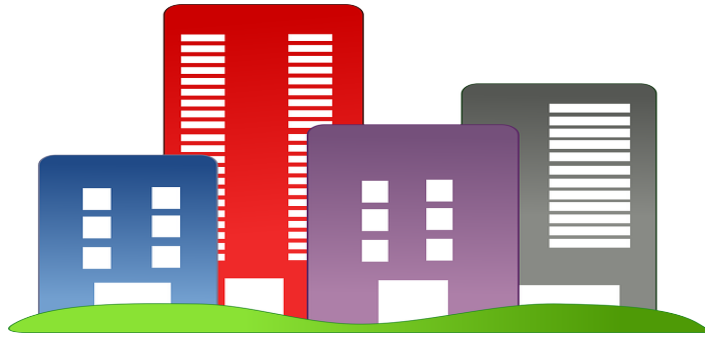


## Student Resources

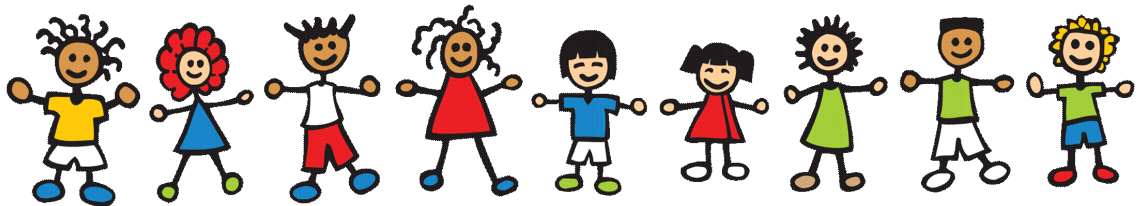
*“We are your source for resources.”*



### Housing Assistance/ Emergency and Domestic Violence Shelters:

- **Unity of Greater New Orleans** 504-899-4589, 504-821-4496, hotline 1-888-821-4542, [www.unitygno.org](http://www.unitygno.org) 2407 Baronne St. and 2475 Canal St., New Orleans, 70113 M-F 8:30-4, outreach Sat 8-4, Sun 10-5
- **New Orleans Women and Children Shelter** 504-522-9340, [www.nowcs.org](http://www.nowcs.org) 2020 S Liberty St., New Orleans, LA 70113
- **Ozamen Inn** 504-523-1184 [www.ozanaminn.org](http://www.ozanaminn.org) ,2239 Poydras St., New Orleans, Intake 8-4, bed request(s) ends at 4PM
- **Salvation Army** 504-899-4569, [salvaonarmyalm.org/nola/center-of-hope/](http://salvaonarmyalm.org/nola/center-of-hope/) Office: 4526 S. Claiborne Ave Shelter: 4500 S Claiborne Ave, New Orleans, 70125, Office: 8:30-4:30 M-F, Intakes 4:00pm-6:00pm. Morning departure by 7 AM, return to shelter at 4:00pm. Curfew is 6:00 pm. No weekend entries
- **Armstrong Family Services** 504-899-2995 2658, Ursulines; New Orleans, LA 70119, Office Hours: M-F 8 a.m. - 5 p.m.
- **Covenant House** 504-584-1111, [www.covenanthousenola.org](http://www.covenanthousenola.org), 611 N. Rampart St., New Orleans, 70112
- **Crescent House** (Domestic Violence) (504) 866-7481

- **Hagar's House for Women** 504-210-5064, [www.hagarsousenola.org](http://www.hagarsousenola.org), hagarshouse@gmail.com, Intake hours, call M-F, 9-5
- **New Orleans Low Barrier Shelter** 504-517-1815 1530, Gravier Street
- **New Orleans Mission** 504-638-5434, [www.neworleansmission.org](http://www.neworleansmission.org) ,1130 Oretha Castle Haley Blvd., New Orleans, 70113, M-F 9-6 office hours, 24/7
- **Jesus Miracle House** (504) 931-5179
- **Low Barrier Shelter** 1530 Gravier St., (504) 517-1815
- **Metropolitan Battered Women's Shelter** (504) 837-5400
- **New Orleans Family Justice Center** (Domestic Violence) (504) 592-4005
- **New Orleans Mission** 1130 Oretha Castle Haley Blvd., (504) 523-2116
- **New Orleans Women's Shelter** 2020 S. Liberty St., (504) 962-6697
- **Ozanam Inn** (Men Only) 843 Camp Street, (504) 523-1184
- **Grace at the Greenlight (Travel)** (504) 239-4544
- **Salvation Army** (M, W, & [Families Call for Availability]) – 4500 S. Claiborne Ave., (504) 899-4569
- **Woman's Space** 2407 Baronne St., (504) 895-6600
- **Unity** (504) 899-4589
- **Duvernay Residence** (504) 299-1260
- **Volunteers of America** (504) 483-3550
- **Homeless Unit of the Police Dept. Sam** (504) 250-1543



## Childcare Assistance:

- **Head Start New Orleans** 504-861-6344 [www.ccano.org/head-start-program](http://www.ccano.org/head-start-program)
- **Child Care Assistance Program (CCAP)** 1-877-453-2721, [LDEccap@la.gov](mailto:LDEccap@la.gov) or [HTTPS://CAFE-CP.DOE.LOUISIANA.GOV/EDSELFERVICE/](https://cafe-cp.doe.louisiana.gov/edselfservice/)
- **Kingsley House** 504-523-6221, [www.kingsleyhouse.org](http://www.kingsleyhouse.org) ,1600 Constance St., New Orleans, 70130, M-F 8-5

- **Agenda for Children** 504-586-8509, 800-486-1712  
www.agendaforchildren.org, 8300 Earhart Blvd., Suite 201, New Orleans, 70118, M-F, 9-5
- **Community Resource and Referral Center** 504- 658-2944, 1530 Gravier St., New Orleans, LA, M-F ,7:30-4
- **Hope House** 504-525-2561, fax 504-525-0011, 916 Saint Andrew St., New Orleans (Irish Channel), 70130, M-F, 9am-5pm
- **Partners for Healthy Babies Hotline** 800-251-2229 hotline,  
www.1800251baby.org, Central Time: M-F: 7am - 10 pm, Sat-Sun: 11am -7pm



## Transportation Assistance:

- **New Orleans Regional Transit Authority (RTA)** General rider inquiries (504) 248-3900, 5am-8pm daily
- **RTA** free bus passes (while supplies last)



## Food/Meal Securities:

- **Broadmoor Improvement Association** 504-249-5130, wellness@broadmoorimprovement.com  
www.broadmoorimprovement.com, Food Pantry Mon 10-12 & Wed 1-3:30
- **Community Kitchen** 504-383-3349 kitchen@commiekitsch.org  
[www.commiekitsch.org](http://www.commiekitsch.org)
- **Crescent City Café** [www.crescentcitycafe.com](http://www.crescentcitycafe.com) info@crescentcitycafe.com  
3900 St. Charles Ave (Rayne Memorial United Methodist Church), 1st & 3rd  
Saturday of each month, 8-9:30 AM
- **Culture Aid NOLA Food Distro** Wednesdays, 6pm Our Lady Star of the Sea,  
1835 St. Roch- Saturdays, 9am Corpus Christi Church, 2022 St. Bernard Ave.
- **Food Pantries Database** [www.foodpantries.org/ci/la-new\\_orleans](http://www.foodpantries.org/ci/la-new_orleans)
- **GNO Caring Collective** hBps://www.gnocaringcollecve.org/  
[www.facebook.com/GNOCaringCollective](https://www.facebook.com/GNOCaringCollective)
- **Hope House** 504 525 2561, 916 Saint Andrew St., New Orleans (Irish  
Channel), 70130, MWF 9-1PM, TTH 9-4PM
- **Lantern Light at Rebuild Center** (504) 273-5577, [www.lanternlight.org](http://www.lanternlight.org)  
,1803 Gravier St., New Orleans, 70112, M-F 8 -2:30
- **New Orleans Community Fridges** [www.nolacommunityfridges.org/](http://www.nolacommunityfridges.org/)  
locations, Food and meals in fridges in several locations across the city,  
available 24/7. Current locations as of April 2022: 1522 N Villere St., 1915  
Third St., 2425 N Miro St., 3908 Joliet St. @ Trinity Community Center, 3636  
Washington Ave., 2500 Frenchmen St., 719 Bartholomew St. (Baby Staon),  
300 N. Broad @ Sprout Nola--behind Whole Foods on Con, 2117-19 N.  
Claiborne Ave. @ New Orleans Writers Residency, 1809 Oretha Castle Haley  
Blvd. @ UMW, St. John Grand Lodge 1020 Kentucky St. @ River Queens  
Farm, 3300 Palmyra St., 923 Hagan Ave. ,1800 Monroe St., 1206 Touro St.,  
2528 Lapeyrouse St., 300 Wagner St. (Algiers), 7300 Read Blvd., Suite J (New  
Orleans East), 1126 Piety St., 1804 Deslonde St., 3504 4th St. (Harvey), 1941  
Marigny St.
- **New Orleans Mutual Aid Group Food Banks** now on SUNDAYS, 4-6pm at  
Florida & St. Roch, (504) 383-3790



- **St. Jude Community Center** 504-931-6993, 504-553-5790, 400 N. Rampart, New Orleans, 70112
- **St. Peter Claver Church** 504-822-8059, fax 504-822-9251, 1910 Ursulines Ave., New Orleans, 70116
- **Sankofa Lower 9 Food Pantry** [sankofanola.org/fresh-food-pantry/](http://sankofanola.org/fresh-food-pantry/), 504-872-9214, 5200 Dauphine St, New Orleans, Mon., and Wed. 10am-12pm
- **Southern Solidarity** [southernsolidarity@gmail.com](mailto:southernsolidarity@gmail.com)
- **Food Stamp Program (SNAP)** 1-888-LAHELPU, (1-888-524-3578) [www.dcfslouisiana.gov](http://www.dcfslouisiana.gov)
- **WIC Women Infant and Children's Nutrition Program** 1-800-251-2229, LA Office 225-342-7893, [www.wic.dhh.louisiana.gov](http://www.wic.dhh.louisiana.gov)
- **Orleans Parish WIC Clinic** (504) 658-2895, Fax 504-565-7493, 2222 Simon Bolivar Ave., 2nd Fl. (in Central City Health Clinic Building, Edna Pillsbury Clinic), New Orleans, 70113, M-F 8-12, 1-4 Free
- **New Orleans Mutual Aid Group (NOMAG) Food Banks** now on Sundays, 4-6pm at Florida & St. Roch., (504) 383-3790
- **Broadmoor Improvement Association** 504-249-5130, [wellness@broadmoorimprovement.com](mailto:wellness@broadmoorimprovement.com), [www.broadmoorimprovement.com](http://www.broadmoorimprovement.com), 3900 General Taylor, New Orleans (Broadmoor) Office hours M-Sat 9-5, Food Pantry Mon 10-12 & Wed 1-3, Wellness Center Hours M-Th 9am-9pm, Fri 12pm-9pm, Sat 9am-2pm
- **Ozanam Inn** 6:00 am, 2:00 pm, 6:00 pm
- **St. Jude Community Center** 11:30 am
- **Second Harvest** Helping Low-Income Housed Individuals, 1-855-392-9338
- **Food for Families** Helping Low-Income Seniors and Women with Children who are housed, (504) 245-8182



- **LA SNAP/Food Stamps** 1630 Iberville St., Ste., 1000 1-888-524-3578 (Press 1 for English, followed by 3, 1, 2, and 6 to reach operator) For SNAP Info: Text getsnap to 898-211 or call 1.888.524.357



## Employment/Career/Job Services and Training:

- **Liberty's Kitchen** 504-822-4011, [www.libertyskitchen.org](http://www.libertyskitchen.org) ,300 N Broad (in ReFresh Project), New Orleans, 70119
- **New Orleans Job Corp** (504) 484-3501, fax 504-483-9078, [neworleans.jobcorps.gov](http://neworleans.jobcorps.gov) [glomb.heather@jobscorps.org](mailto:glomb.heather@jobscorps.org) ,M-F 8-4:45
- **Unemployment Insurance/ LA Workforce Commission** 866-783-5567, [www.laworks.net](http://www.laworks.net)
- **Work NOLA Listings** [workNOLA.com](http://workNOLA.com)
- **Indeed Job Listing** [indeed.com](http://indeed.com)
- **Café Reconcile Youth Hospitality Training Program** (504) 568-1157, Fax: (504) 568-9599, [www.cafereconcile.org](http://www.cafereconcile.org) ,Oretha Castle Haley Blvd., New Orleans, 70113
- **City of New Orleans Workforce Development** [www.nola.gov/economic-development/workforce-development/job1/](http://www.nola.gov/economic-development/workforce-development/job1/) ,504-658-4500, 3400 Tulane Ave, New Orleans, 70119
- **Jefferson Parish Workforce Connection** [www.jeffparish.net/departments/workforce-connecon](http://www.jeffparish.net/departments/workforce-connecon), M-F, 8:30-4:30 (Closes at 2:30 on Th)
- **AARP** (55 and over) 2475 Canal St., (504) 822-2671
- **Job 1** 3400 Tulane Ave., (504) 658-4500
- **Goodwill** 3400 Tulane Ave., (504) 456-2622
- **St. Vincent DePaul** Canal St. (504) 748-2673
- **Traveler's Aid** 1530 Gravier St. (504) 412-3700 ext. 13952
- **Unemployment Claims** 1.866.783.5567 or [www.louisianaworks.net/hire](http://www.louisianaworks.net/hire)



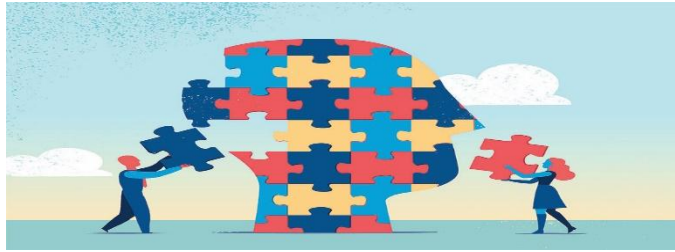
## Mental Health and Basic Health Care Services:

- **Beacon Behavioral Health** 504-581-4333, [www.beaconbh.com](http://www.beaconbh.com) ,3200 Ridgelake Dr., Ste 100, Metairie 70002, Monday- Friday, 8:00am-4:30pm
- **Sage New Orleans** 504-517-2345, [www.sageneworleans.org](http://www.sageneworleans.org) ,2601 Tulane Ave., Ste. 500, New Orleans, 70119
- **Anna's Place NOLA** St. Anna's Episcopal Church, 1313 Esplanade Ave., NOLA 70116, (504) 947-2121, [annasplace@stannanola.org](mailto:annasplace@stannanola.org)
- **Children's Bureau** 504-525-2366, [www.childrensbureaunola.org](http://www.childrensbureaunola.org), After hours emergencies: (504) 269-2673, 2626 Canal St., Ste. 201, New Orleans, 70119, M-F, 9-6
- **Community Care Hospital** information on admissions call 504-899-2500 and ask for Intake Coordinator Outpatient Care 504-894-1999, 1421 General Taylor St., New Orleans, 70115, M-F, 9-5
- **Cope Line by Via Link** 504-269-COPE (2673) or 211; Also, Nat'l Suicide Prevention Lifeline 800-273-8255, [www.vialink.org](http://www.vialink.org)
- **Jefferson Parish Human Services Authority** 504-349-8708 for West Bank residents or 504- 838-5257 for East Bank residents; After hours crisis line: 504- 832-5123; [www.jphsa.org](http://www.jphsa.org), Administrative Offices: 3616 S. 1-10 Service Rd., Metairie, 70001, Office hours M-F, 8-4:30
- **LSU Behavioral Science Center** 504-412-1580, 504-412-1309, 504-412-1540, fax 504-412-1536, [www.lsuahn.com](http://www.lsuahn.com), Locations 3450 Chestnut St., New Orleans, 478 S. Johnson St., New Orleans, M-F, 8-5
- **Loyola Center for Counseling and Education** 504-864-7858, [LCCE@loyno.edu](mailto:LCCE@loyno.edu), Second Floor, Mercy Hall, 2020 Calhoun St., New Orleans, M-Th, 1PM-8PM

# SUNO

SOUTHERN UNIVERSITY *at* NEW ORLEANS

- **Mercy Family Center** Algiers 504-376-2590, Metairie 504-838-8283, Mandeville 985-727-7993, [www.mercy.net/neworleansla](http://www.mercy.net/neworleansla) Algiers: 3221 Behrman Pl., Ste. 105, New Orleans, 70114 Metairie: 110 Veterans Blvd., Ste. 425 Metairie, 70005 Northshore: 1445 W Causeway Approach, Mandeville, 70471, M-F, 8-5



- **Metropolitan Crisis Response Team** 504-826-2675 24 hours a day
- **Metropolitan Human Service District Office** Line: 504-568-3130, Office hours M-F 8-4:30, Crisis Line: 504-826-2675; Help is available 24 hours a day, 7 days a week, [www.mhsdla.org](http://www.mhsdla.org)
- **NAMI National Alliance on Mental Illness** Main Number: 504-896-2345; West Bank: 504-368-1944, Fax 504-896-2240, [www.namineworleans.org](http://www.namineworleans.org), 1538 Louisiana Ave., New Orleans, M-F, 8:30-4:30, Office Hours, Uptown Drop-In Center Tues. & Th 1:30-4:30
- **National Suicide Prevention** Lifeline 800-273-8255 (English & Spanish), 888-628-9454 (Spanish), 800-799-4889 for hearing & speech impaired with TTY [www.suicidepreventionlifeline.org](http://www.suicidepreventionlifeline.org), 24 Hours
- **Positive Living Treatment Center** 504-827-2701, 3330 Canal St., New Orleans, 70119, M-F, 9-5
- **True Love Movement** 504-309-LOVE, [truelovemovement.com](http://truelovemovement.com)
- **Health Care for the Homeless** 1530 Gravier St., 2222 Simon Bolivar, (504) 658-2785
- **University Hospital** 2000 Canal St., (504) 903-3000
- **Daughters of Charity** 3201 S. Carrollton Ave., (504) 207- 3060
- **Tulane Community Health Center** (504) 609-3500
- **Tulane Health Center at Covenant House** 611 N. Rampart St., (504) 998-3000





- **Bridge House** 504-821-7120, [www.bridgehouse.org](http://www.bridgehouse.org) ,4150 Earhart Blvd., New Orleans, 70125, Intake M-F, 9-2
- **Community Care Solution** 504-766-0157, [admin@ccsgno.md](mailto:admin@ccsgno.md)  
[www.ccsyno.com](http://www.ccsyno.com) ,200 South Broad St. Suite 7, New Orleans, LA 70119
- **Council on Alcohol and Drug** abuse for greater New Orleans 504-821-2232;  
[www.cadagno.org](http://www.cadagno.org) ,2640 Canal St., 4th Fl., New Orleans, 70119, M-F, 9-4:30  
office hours, drug education classes by appointment only
- **Bethel Colony** Men (504) 943-0456, Women (504) 324-0617, 4114 Old  
Gentilly Rd., New Orleans, LA
- **Odyssey House** M&W (504) 324-3710, 732 N. Claiborne Ave., New Orleans,  
LA
- **Salvation Army** (Men only) (504) 835-7130, 200 Jefferson Hwy., Metairie, LA



- **Bethel Colony** (M&W), 4114 Old Gentilly Rd. Men, (504) 943-0456 Women  
(504) 324-0617
- **Bridge House** (Men Only) 4150 Earhart Blvd., (504) 522-4475
- **Gateway (Men Only)** 4103 Lac Couture Dr, Harvey, (504)368-9935
- **Grace House** (Women Only) 1401 Delachaise St., (504) 899-2423
- **Odyssey House Detox** (M&W) 732 N. Claiborne Ave., (504) 324- 3710
- **Responsibility House** (M&W) 1799 Stumpf Blvd., Terrytown, (504) 324 6265
- **Salvation Army** (Men Only) 200 Jefferson Hwy., (504) 835-7130



## SUNO's On Campus Resources:

- **Counseling Center – Ms. Kimberly Paige, University Counselor, University Center, 2d Fl., (504) 286-5127 (Office), (504) 451-7909 (Cell), [kpaige@suno.edu](mailto:kpaige@suno.edu)**
- **Student Health Services – Ms. Cheryl Crosby, University Nurse, University Center, 2<sup>nd</sup> Fl., (504) 286- 5374, [studenthealth@suno.edu](mailto:studenthealth@suno.edu)**
- **Disabilities Services – Ms. Sheridan Cooper, University Center, 2<sup>nd</sup> Fl., (504) 286-5362, [scooper@suno.edu](mailto:scooper@suno.edu)**
- **Library and Resources – Ms. Shatque Wilson, Director of Leonard S. Washington Memorial Library, Main Campus, (504) 286-5225, [swilson@suno.edu](mailto:swilson@suno.edu)**
- **Veteran Services – Ms. Keshaneoco Johnson, Director of Veterans Affairs, University Center, 2<sup>nd</sup> Fl., (504) 286-5391, [SUNOVA@my.suno.edu](mailto:SUNOVA@my.suno.edu), [kjohnson@suno.edu](mailto:kjohnson@suno.edu)**
- **Career Services – Ms. Karen Francis, Director of Career Services, University Center, 2<sup>nd</sup> Fl., (504) 286-5343, [kfrancis@suno.edu](mailto:kfrancis@suno.edu)**
- **Campus Police – Mr. Bruce Adams, Chief of Campus Police, 6400 Press Dr. (Police Headquarters), (504) 286- 5290 (Non-emergencies), (504) 286-3355 (On campus emergencies), 911 Emergencies**
- **Student Support Services (SSS/TRIO Program - students must meet certain requirements) – Ms. Linda Frederick, Director of Student Support Services, Lake Campus - College of Education and Human Development Bldg., (504) 286 -5106, [lfrederick@suno.edu](mailto:lfrederick@suno.edu)**
- **“Knights with a Purpose” Community Service-Learning – Ms. Cheryl Legohn-Tubbs, Service-Learning Coordinator and Resource Manager, University Center, 2nd Floor, (504) 286-5365, [ctubbs@suno.edu](mailto:ctubbs@suno.edu)**

## Emergency Aid:

- **Catholic Charities Archdiocese of New Orleans** 504-523-3755, TOLL-FREE 1-866-891-2210, FAX: 504-523-2789, [www.ccano.org](http://www.ccano.org), Twitter at [twitter.com/catholic charities](https://twitter.com/catholiccharities), NO Facebook at [www.facebook.com/ catholic charities NO](https://www.facebook.com/catholiccharitiesNO), 1000 Howard Avenue, Suite 200, New Orleans, LA 70113-1942
- **Harry Thompson Center at Rebuild Center** 504-273-5547, [www.harrythompsoncenter.org](http://www.harrythompsoncenter.org) ,1803 Gravier (behind St. Joseph's), and 1530 Gravier, New Orleans, 70112, M-F, 7:30 -2:30
- **GNO Collective** [operations@gnocaringcollective.org](mailto:operations@gnocaringcollective.org) hBps:// [www.gnocaringcollective.org/](http://www.gnocaringcollective.org/) [www.facebook.com/GNOCaringCollective](https://www.facebook.com/GNOCaringCollective)
- **Lantern Light at Rebuild Center** 504-273-5573, [www.lanternlight.org](http://www.lanternlight.org) ,1803 Gravier St., New Orleans, 70112, M-F, 8 -2:30
- **St. Luke Community Center** 985-641-6421, [www.saintlukeslidell.org/](http://www.saintlukeslidell.org/) goodsams ,910 Cross Gates Blvd., Slidell, LA 70461 M-Th 1:30-4, T-F 9:30-12, F 1-3:30
- **St. Peter Claver Church** 504-822-8059, fax 504-822-9251, food pantry 504-827-0707, 1910 Ursulines Ave., New Orleans, 70116, M-F 9-5 office hours
- **Total Community Action** 504-324-8609, 504-822-7181 [www.tca-nola.org](http://www.tca-nola.org) ,1420 South Norman C Francis Pkwy, New Orleans, 70125, M-F, 8:3-5:30
- **Crisis Hotline** 1-866-310-7977



## LGBTQ Services:

- **BreakOUT!** (504) 252-9025, [www.facebook.com/youthBreakOUT](http://www.facebook.com/youthBreakOUT), [www.youthbreakout.org](http://www.youthbreakout.org), 4327 Canal Street, New Orleans, 70119 Monday-Tuesday 10-6, Wednesday 1-6, Thursday-Friday 10-6
- **Brotherhood Inc.** (504) 566-7955, [www.brotherhoodinc.org](http://www.brotherhoodinc.org), 2714 Canal Street, Ste. 503, New Orleans, 70119, M-F, 10-4
- **Crescent Care Gender Clinic** 504-821-2601, [crescentcare.org](http://crescentcare.org) or [tcher.cc](http://tcher.cc) (a guide to trans women's sexual health and well-being), 3308 Tulane Ave. and 1631 Elysian Fields Ave.
- **LGBT Community Center of New Orleans** [www.lgbtccneworleans.org](http://www.lgbtccneworleans.org), 504 407 5428, 2727 S Broad, Ste 101, New Orleans, 70125
- **Louisiana Trans Advocate** 504-450-7496, [info@latransadvocates.org](mailto:info@latransadvocates.org) [www.latransadvocates.org](http://www.latransadvocates.org)
- **Moore O'Neal** 504-475-8046, [smandisamoore.esq@gmail.com](mailto:smandisamoore.esq@gmail.com), 10a-6p, Monday thru Friday, 12-4p Saturday



## Legal and Formerly Incarcerated Services:

- **Innocence Project New Orleans** 504-943-1902, [info@ip-no.org](mailto:info@ip-no.org), [www.ip-no.org](http://www.ip-no.org), 4051 Ulloa Street, New Orleans, 70119
- **Justice and Accountability Center of Louisiana** 504-322-4050, [www.jaclouisiana.org](http://www.jaclouisiana.org) [info@jacLouisiana.org](mailto:info@jacLouisiana.org), 4035 Washington Avenue, Suite 203, New Orleans, 70125
- **Louisiana Center for Children's Rights** 504-658-6860, [www.laccr.org](http://www.laccr.org), 1100-B Milton Street, New Orleans, 70122



- **Louisiana Civil Justice** 504-355-0970, (800) 310-7029, [www.laciviljusce.org](http://www.laciviljusce.org), M-F, 9-4
- **Community Service Center** (Assistance w/Formerly Incarcerated) 4000 Magazine St., (504) 897-6277
- **Day Reporting Center** (Formerly Incarcerated) (504) 827-6770
- **Goodwill** (Formerly Incarcerated) 3400 Tulane Ave., (504) 456-2622
- **The First 72** (Formerly Incarcerated) 2917 Perdido St., (504) 324-8859



## Domestic Violence:

- **Shelters for Victims Fleeing Violence Crescent House/A** program of the NOFJC (New Orleans) 504-866-9554; Beyond the Veil (New Orleans) 504-259-4844; Metro Centers for Community Advocacy (Jefferson) 504-837-5400; St. Bernard Battered Women's Shelter (Arabi) 504-277-3177 The Haven (Houma) 1 (800) 915-0045; Safe Harbor (Mandeville) 985-839-8989; Jeff Davis (Jennings) 337-616-8418; Oasis (Lake Charles) 337-436-4552

- **New Orleans Family Justice Center (NOFJC)** 504-592-4005, Fax 504-592-4009, [www.no\]c.org](http://www.no]c.org) 701 Loyola Ave, 2nd Fl., Ste. 201, New Orleans, 70113, M-F, 8:30-5
- **Silence is Violence** 504-948-0917, [www.silenceisviolence.org](http://www.silenceisviolence.org) ,3401 St. Claude Ave, First Floor, New Orleans, LA 70117, M-F, 9-5
- **Crescent House** (504) 866- 7481
- **Metropolitan Battered Women’s Shelter** (504) 837-5400
- **N.O. Family Justice Center** (504) 592-4005
- **St. Bernard Battered Women’s Shelter** (504) 277-0502



## Tutoring Services:

- Will be announced soon for all SUNO scholars!
- SSS Participants Only – Mrs. Kendria Jones, SSS Study Skills Coordinator, (504) 286-5126, [kjones@suno.edu](mailto:kjones@suno.edu)



## Other Assistance/Service:



- **IRS** – 1555 Poydras St. (504) 558-3344
- **Social Security Admin.** 400 Poydras St., Ste. 500, 1-800-772-1213
- **Social Security Direct Express Card** 1-888-741-1115
- **Catholic Charities Help Line** 1-866-891-2210
- **Affordable Care Act (President Obamacare)** 1 (800) 318-2596,  
www.healthcare.gov
- **Louisiana Medicaid** 1 (888) 342-6207, [www.ldh.la.gov/MyMedicaid](http://www.ldh.la.gov/MyMedicaid)
- **Louisiana Medicare** 1 (800) 772-1213, 400 Poydras St., Ste. 500, New Orleans, LA 70130, <https://www.ssa.gov/benefits/disability/>
- **VIA Link (Low-cost medical services)** 1 (800) 749-2673
- **Catholic Charities Immigration Legal Services** (504) 310-6873
- **Department of Motor Vehicles** 100 Veterans Blvd., (504) 483-1870
- **Total Community Action** 1420 S. Jeff Davis Pkwy., (504) 324-8609
- **US Citizenship & Immigration Services (USCIS)** - 1250 Poydras St., Ste., 1800, 1-800-375-5283
- **Hurricane Preparedness Guides:** Download a copy of the NOLA Ready Guide to Hurricanes  
**View:** 1) Emergency Preparedness/LA Dept. of Health - <https://ldh.la.gov> ;  
2) Governor’s Office of Homeland Security and Emergency Preparedness (GOHSEP) – <https://gohsep.la.gov> ; 3) Official Louisiana Hurricane Survival Guide – <http://www.lsp.org> ; 4) Get a Game Plan – <https://www.getagameplan.org>

***Note: Contact information such as telephone numbers, locations, times, email addresses, etc. are subject to change without notice.***